

## Where's Waldo?

The directory below provides an updated alphabetical list of campus staff and their office locations for the winter term. All telephone extensions remain the same and faculty members will post their winter term office hours immediately outside their offices.

### CORNWALL CAMPUS REVISED OFFICE LOCATIONS – JANUARY, 2010

WHO	ROOM	WHO	ROOM
Allaire, Andre	M174A	Morin, Yvon	A203
Allaire, Felix	M138	Nixon, Brigitta	M224B
Athletics	M160	O'Brien, Jim	M247
Barrer, Wayne	A203	Orwell, Donna	M323
Boulerice, Sean	M309	Parisien, Joe	A203
Brunet, Elysa	M320	Part-time Faculty Office	M247
Burrows, Mona	M224A	Peace, Doreen	M324
Caron, J.R.	M138	Petrynka, Henry	M248
Cashion, Jackie	M226B	Petrynka, Rose	M325
Clark, Natalie	A341	Pettinella, Mike	A209
Clement, Diane	M311	Pilon, Michel	M317
Cooper, Laurie	A343	Receiving	A129
Cordell, Krista	M317	Roberts, Joanne	M322
Culleton, Lori	M301	Ruest, Reina	M231
Daigle, Mark	M137	Shannon, Dan	M321
Da Silva, Jo Ann	A103	Simzer, Dave	A203
Encore Office	M133	Souka-Marleau, Jody	M307
Fairweather, Don	M313	Sloan, Ada	M302
Godard, Diane	A103	Smith, Julie	M319
King, Karrie	M321	St-Denis, J.J.	M324
Kingston, Carla	M326	Student Services	A104
Lamoureux, Marc	A203	Taylor, Carolyn	M307
MacKay, Deb	M327	Tinkess, Terry	A112
MacKay, Gord	A203	Tucker, Robert	M306
MacLean, Paul	M324	VanderFluit, James	M135
McLean, Liz	M309	Veilleux, Ben	M305
Menard, Sandra	M242	Walker, Cheryl	M322
Moak, Kim	M303	Wheeler, Margaret	M224C
		White, David	\M304

*M = Moulinette Hall  
A = Aultsville Hall*

**Happy New Year to all students and staff! May 2010 bring you continued success and satisfaction in all of your endeavours at St. Lawrence College.**

As we begin the winter term, you will notice many physical changes on campus. The College recently received \$10,000,000 from the federal and provincial governments to revitalize Moulinette Hall. One of the conditions of receiving this money is that all of the work must be completed in the next 15 months. As a result, construction work is beginning immediately. The Thompson Rosemount Group, a world class company located in Cornwall, has been working for the past few months to complete the architectural and design work for the renovation and Perras-Distefano Construction is now on campus making it happen! Many elements of the project will be completed in time for the September 2010 start up while a few aspects of the project will still need to be worked on in the fall of 2010.

#### Planned Campus Improvements

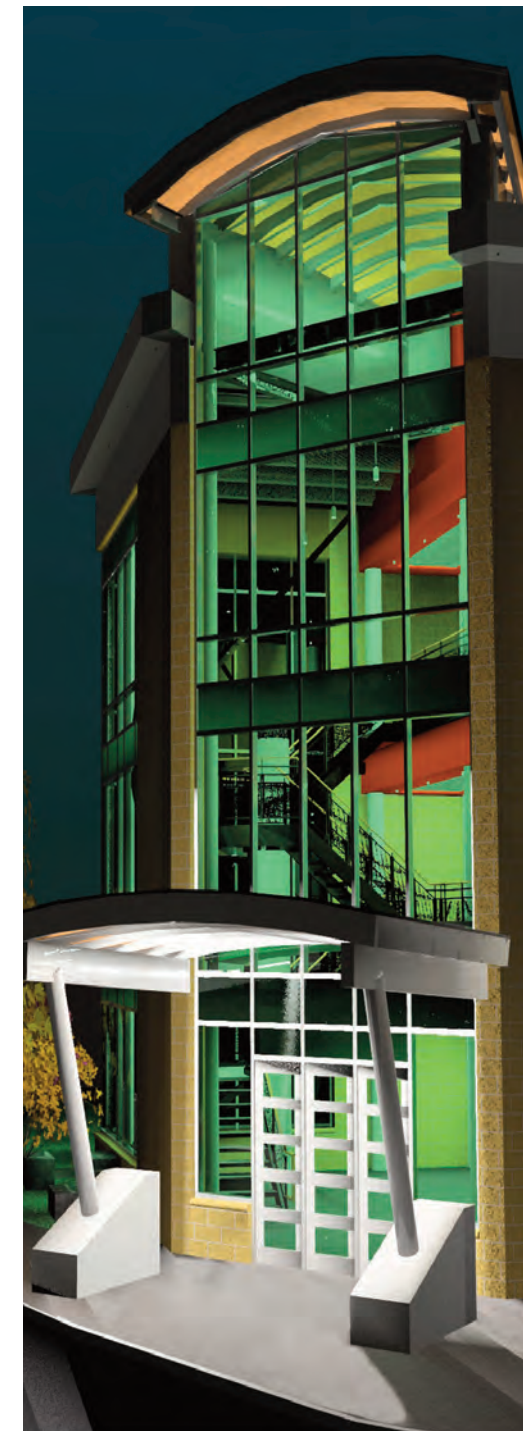
The Moulinette Hall renovation will include:

- new three-storey tower entrance
- new Science, Paramedic, Nursing Labs
- new Computer Labs
- new Weight Training room
- expanded Welding and Fabrication Shop
- new Student Services office
- new classrooms
- new washrooms on every floor
- new internet café
- new WiFi service
- new electrical and plumbing
- air conditioning

#### Supporting the Improvements

To allow the workers the time and space to create these improvements, many classrooms and offices were relocated over the Christmas break. TR Leger Alternative School moved its base of operations to the third floor of Aultsville Hall. Temporary classrooms were constructed in both Moulinette and Aultsville Halls to help provide needed teaching and office space for the winter term. In addition, 6 portable classrooms were moved to the parking lot on the north side of Aultsville Hall to provide alternative classroom space during the period of construction.

While these changes will take a little getting used to, they will not inhibit the quality of instruction in any program.



*A coloured map of the campus, which accompanies this newsletter, highlights all of the room revisions and space changes that have been made for the 2010 winter term. Please use this resource, as necessary, to help you navigate your way around the campus for the first few days of the new term.*

**Questions???**

*If you have any questions or concerns about the campus revitalization project, please feel free to contact:*

**Don Fairweather**

Room M313  
613-933-6080 x2223  
dfairweather@sl.on.ca

**Deborah Mackay**

Room M327  
613-933-6080 x2322  
dmackay@sl.on.ca

**Highlights of the physical changes for the winter term include:**

- Rooms M140, M142, M180, M183, M184, M186, M254, M262, M264, A351 and A352 are out of service for the winter term.
- Portable classrooms P1, P2, P3, P4, P5 & P6, located in the parking lot north of Aultsville Hall, are in service for the winter term. These classrooms can be accessed from the door on the ground floor of Aultsville, near the Student Union and Shark Tank.
- The River Room boardroom has been relocated from A317 to M315. This space will also house V-Desk as of February 1, 2010.
- The north end of the seating area in the Aultsville cafeteria has been turned into a temporary 65-seat classroom. This room is now identified as A104. The vending machines currently located in this area will be moved to the hallway.
- The College Prep Program is being moved to a portable in the parking lot behind Moulinette Hall.
- The part-time faculty office has been moved to M247 from M250.
- Encore classroom M141 has been moved to a portable P7 in the parking lot behind Moulinette.
- Portables P7 to P9 will be located in the parking lot on the west side of Moulinette Hall and will house Encore and Student Testing.
- The wall between M250 (former part-time faculty office) and M252 (former Native Resource Centre) was taken down to create a temporary 50-seat classroom that is now identified as M250.
- The wall between M331 (former University of Ottawa office) and M329 (SEA Resource Centre) was taken down to create a new 45-seat classroom that is now identified as M329.
- The wall between M350 (former SEA classroom), and M352 will be taken down to create a temporary 60-seat classroom that is now identified as M350.
- The Computer lab formerly located in A345 has been moved to M253.
- M353 now replaces classroom A351.
- M359 now houses a Nursing lab to replace A350. The Nursing lab in A349 and the Paramedic lab in A342 will continue to be used in the winter term.



**Parking**

As a result of the placement of portables in some of our parking spaces, it will be necessary for some staff and students to park in other campus parking lots, primarily in the lot west of Moulinette Hall. Even with the new portables on site, there are more than enough parking spaces to accommodate everyone!

**Entering Moulinette Hall**

The entrance to Moulinette Hall, near the bookstore, has been closed so that the new three storey tower entrance can be constructed. This new entrance will be completed by August 2010. Until then, alternate access to Moulinette can be made through a single door near the fitness area or through a set of doors mid-way along the east side of Moulinette Hall. All other doors to Moulinette will also remain open. Students and staff using the link from Aultsville to Moulinette can use the second floor Moulinette hallway, and associated stairwells, to navigate to classrooms and offices in Moulinette.

**Cafeteria**

The snack bar in Moulinette Hall is closed for the winter term. The main cafeteria in Aultsville Hall will continue to provide a full range of food and beverage services. Vending machines will also be available in the ground floor hallway of Aultsville and Moulinette Halls.

**Educational Media Services**

The Educational Media Services office has moved from A320 to M248. All services provided by Henry Petrynka, including support for video production, will be offered from the new location.

**Lockers**

By September 2010, 350 new lockers will be installed in a new locker area in the basement of Moulinette Hall. For the 2010 winter term, however, temporary adjustments have been made. Students with lockers on the first floor of Moulinette Hall adjacent to rooms M140 and M142 will now find their lockers located on the second floor of Aultsville Hall near room A203. Students with lockers in

the basement of Moulinette Hall near the Carpentry shop or M180 will find their lockers relocated to the ground floor of Moulinette Hall near the gymnasium.

**Library**

The library will continue to operate from its current location on the second floor of Aultsville Hall (A211).

**Student Services**

The Student Services office will continue to provide a full range of services for students from its current location on the ground floor of Aultsville Hall (A104).

**Student Union**

The Student Union offices (A118) and the Student Lounge/Shark Tank (A115) will continue to serve students from their present locations on the ground floor of Aultsville Hall.

