

The St. Lawrence College Virtual Private Network (VPN) service allows staff and students to securely access their home directory and Academic Shares on the college's network from a remote location (such as a home computer) or from the wireless network (SSID: SLCPublic) from within the college.

This document provides instructions – specifically for Mac users with Leopard – on how to set up the VPN network connection on your Mac.

IMPORTANT

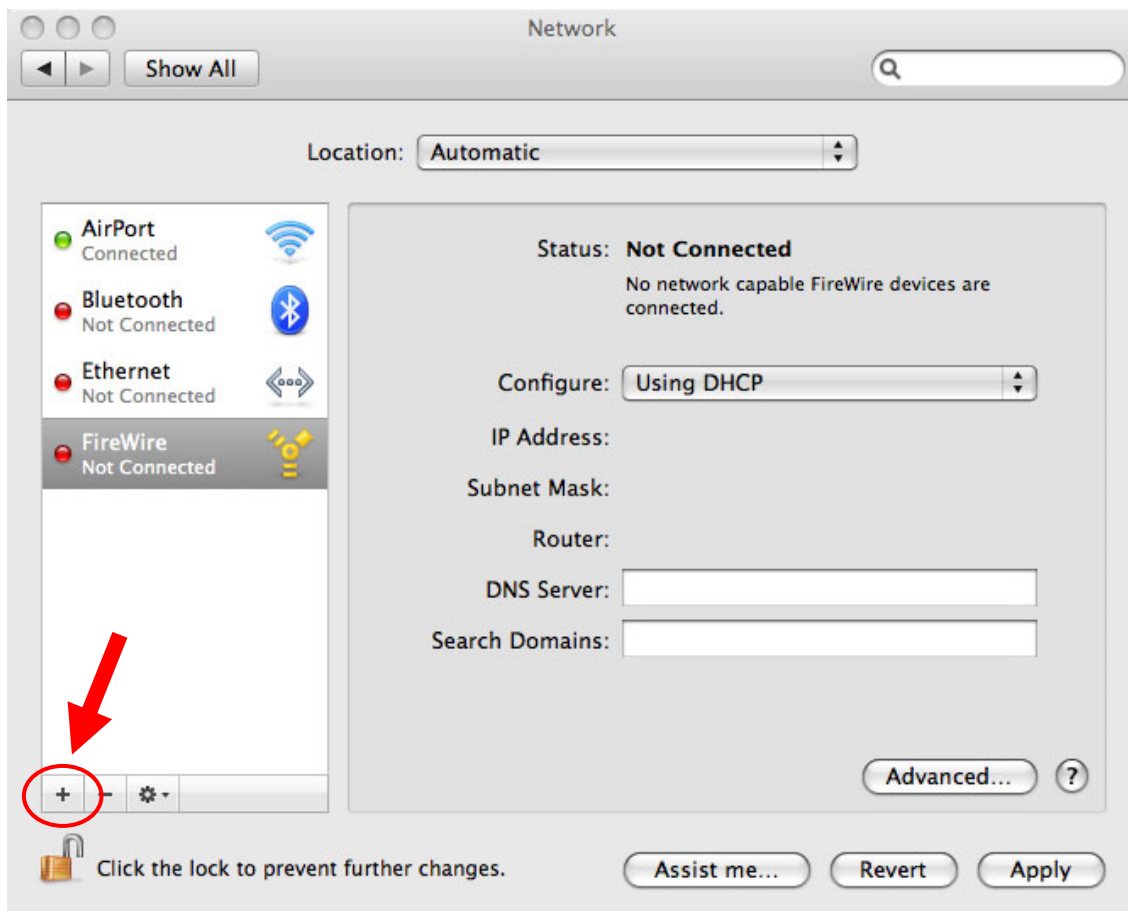
In order to access the **SLC VPN** server, you must already have the ability to connect to the internet from your computer.

First, you should connect to the internet using your standard ISP connection.

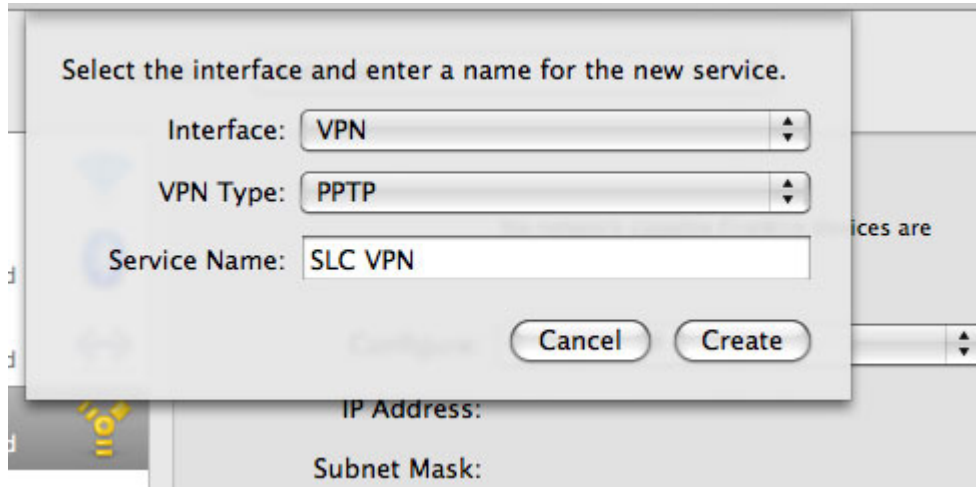
Click the **System Preferences** icon on the Dock, then choose **Network** from the **System Preferences** list.



Click the plus-sign (+) to create a new service / network connection.



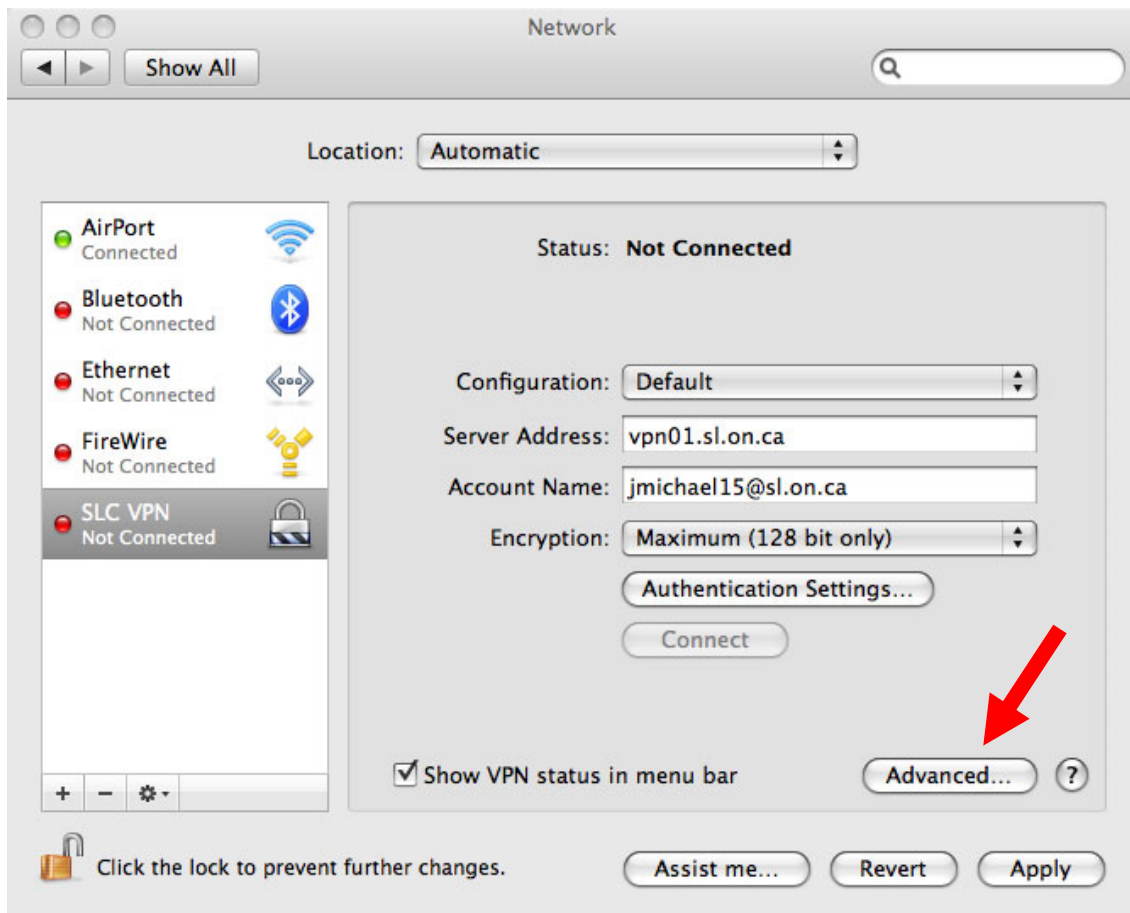
Select the **VPN** interface, for **VPN Type** choose **PPTP**, and enter **SLC VPN** as the Service Name ... then click **Create**.



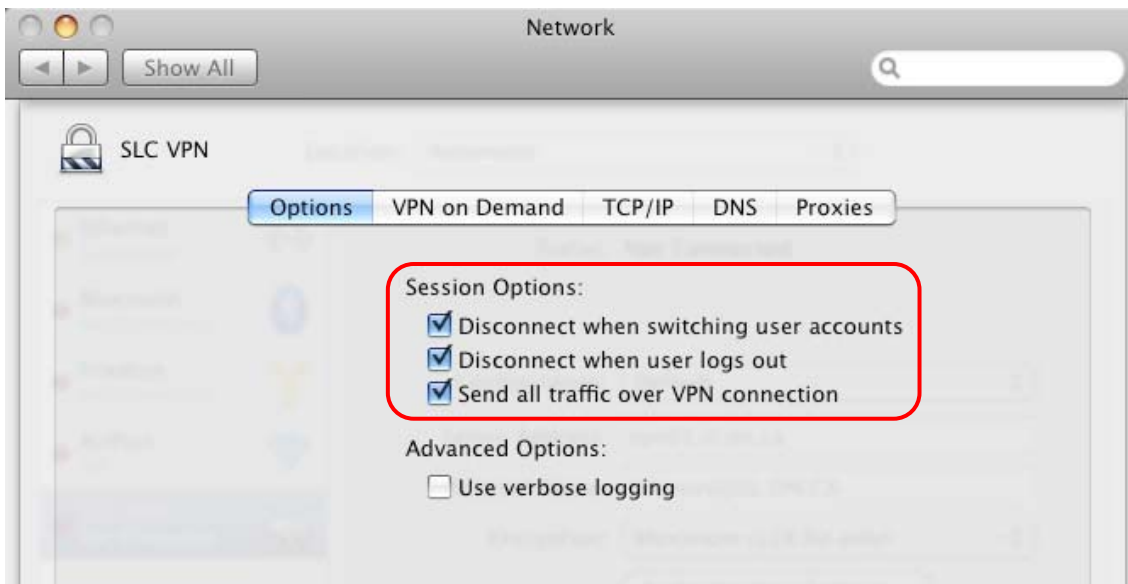
Back at the main window, in the **Server Address:** area enter **vpn01.sl.on.ca**.

In the **Account Name:** area enter your SLC network account.

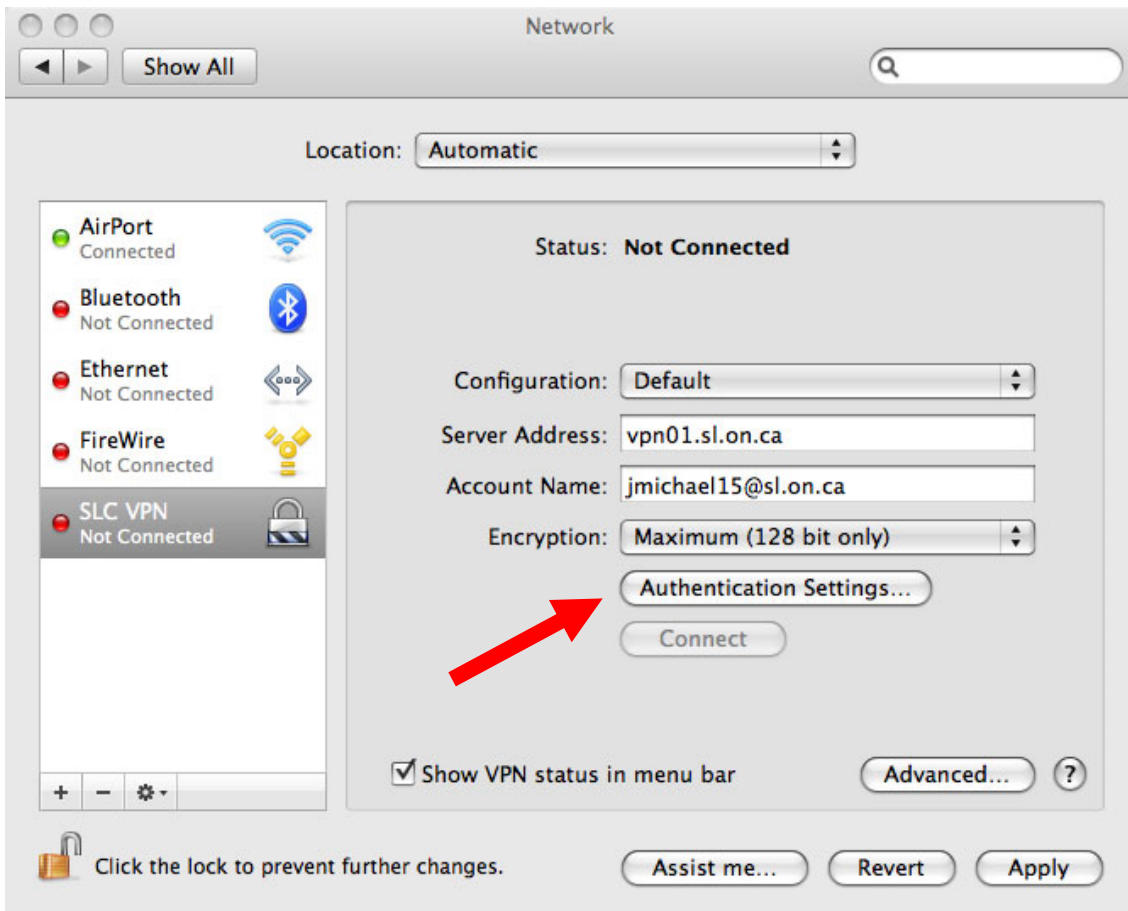
Then click the **Advanced ...** button.



Under **Session Options**: make sure all three options are selected, then click **OK**.



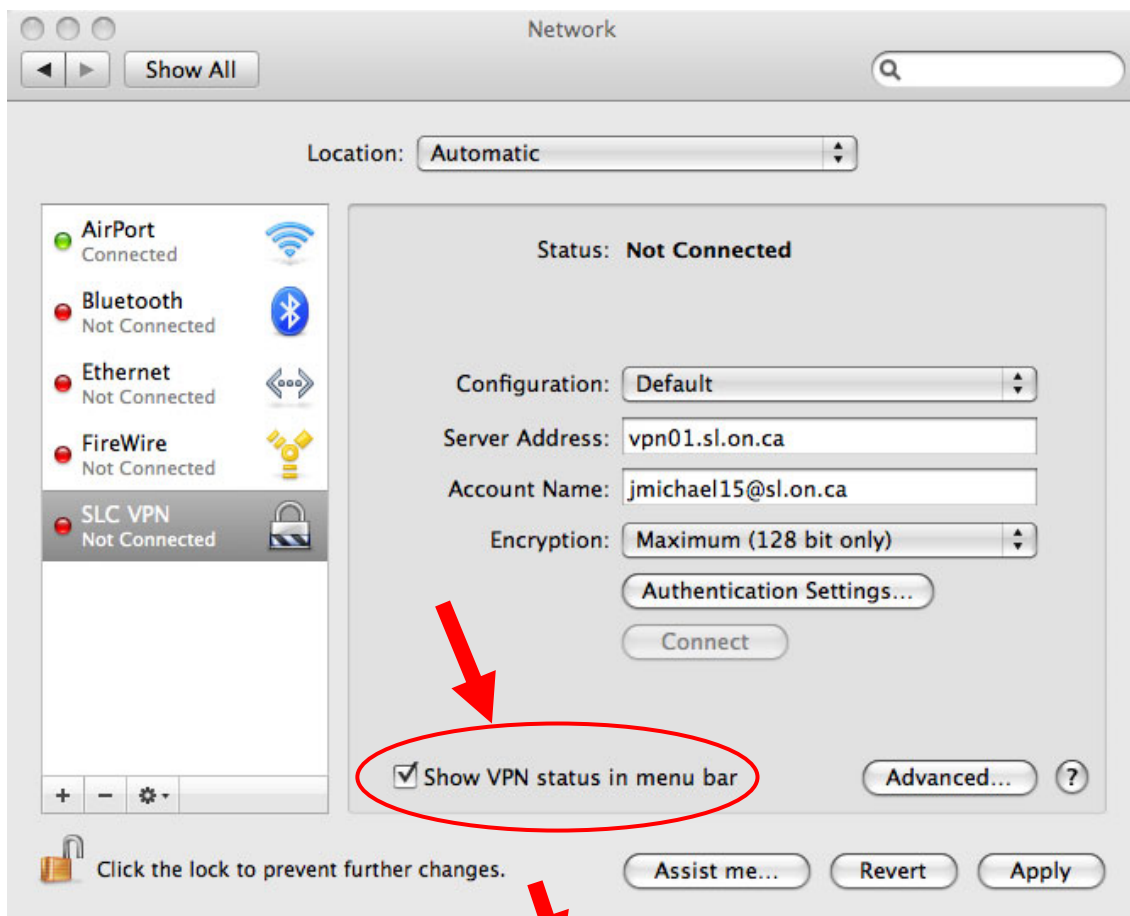
Back at the main window, click the **Authentication Settings ...** button.



Enter your SLC network account password and click **OK**.



Back at the main window, select **Show VPN status in menu bar** – which will allow you to use the VPN connection icon to connect to the network.



To Connect to SLC VPN

First you must ensure that your Mac is connected to the internet through your Internet Service Provider, then click on the VPN connection icon at the top right of the screen ...



... and choose **Connect SLC VPN** from the drop-down menu.

