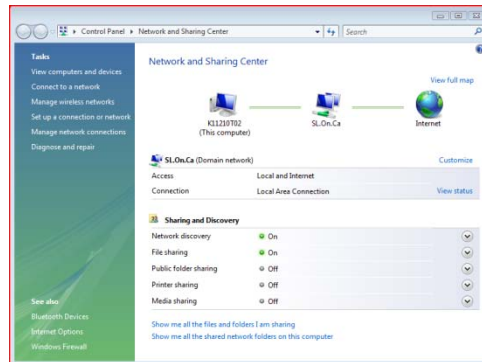


Windows VISTA

Click the *Start* button and choose *Control Panel*. Select *Network and Sharing Center*.



From the list on the left choose *Manage wireless networks*.

Select *Add*.

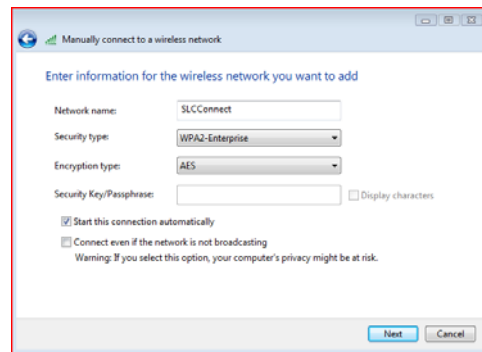
Click *Manually create a network profile*.

Type in settings as below:

Network name: SLCCconnect

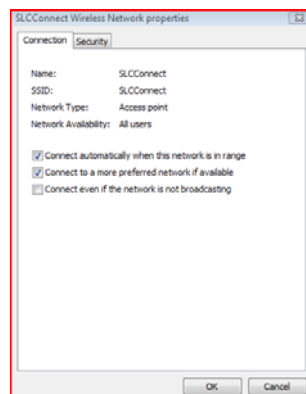
Security type: WPA2-Enterprise

Encryption type: AES



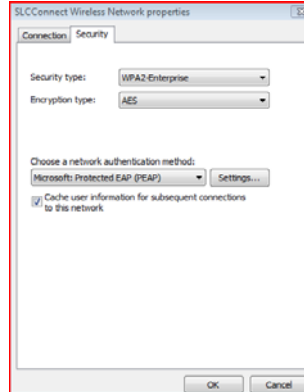
Click *Next*.

Select *Change Connection Settings* and then click on the *Security* tab.



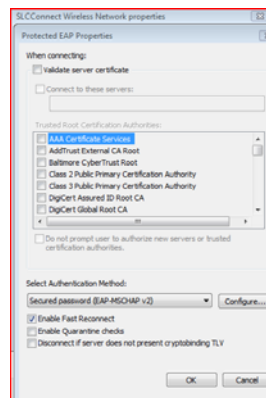
Configure a Wireless Connection for Secure Access ... SSID: SLCCConnect

Under *Choose a network authentication method*: click the *Settings* button.

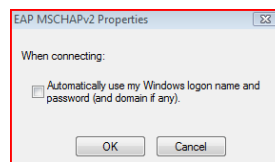


Uncheck the *Validate server certificate* option.

Under *Select Authentication Method* click the *Configure* button.



Uncheck the *Automatically use my Windows logon name and password (and domain if any)* option and then click *OK*.



Click *Connect* and select *Enter Additional Credentials ...* then type in your SL username and password.