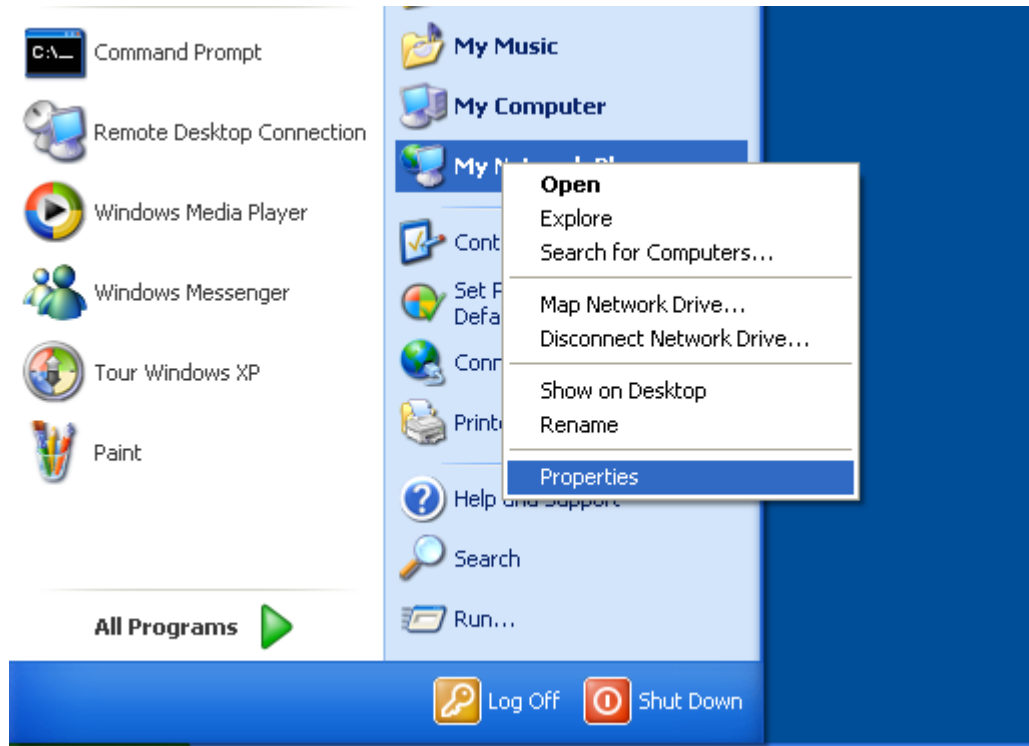


Windows XP

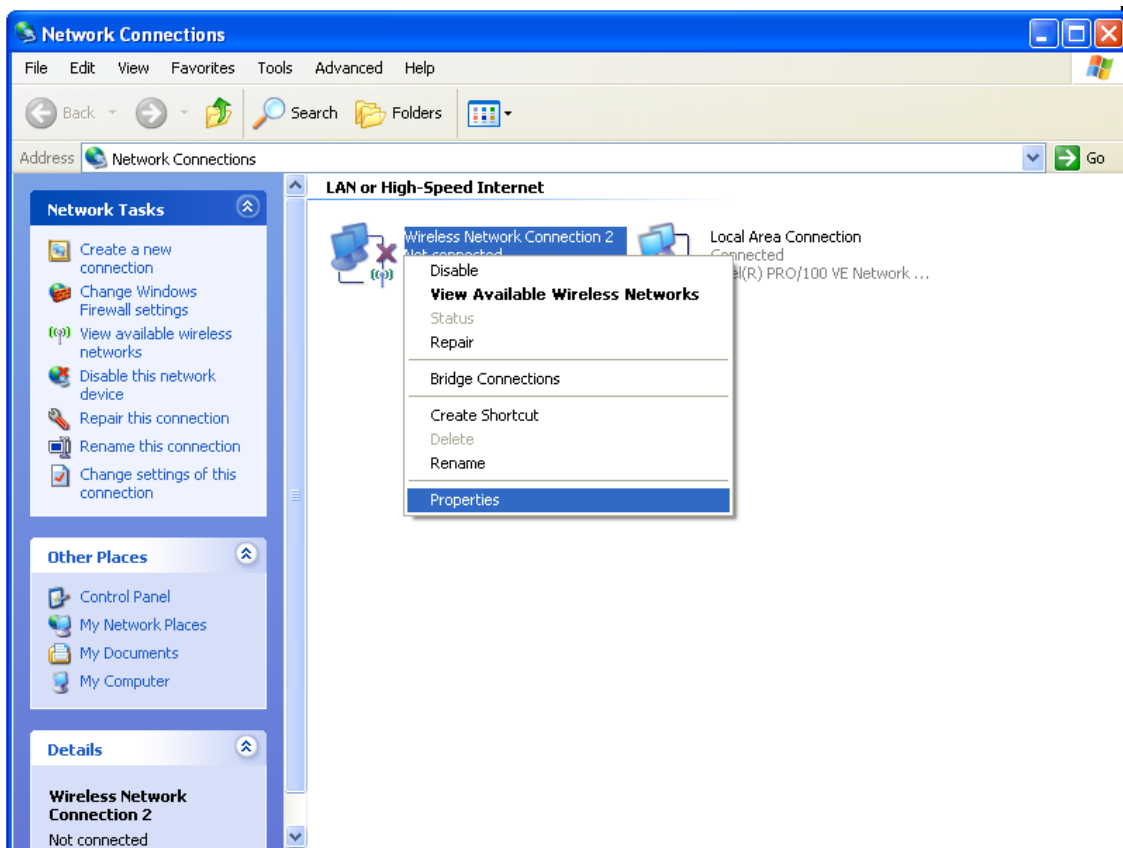
Display the Network Connections Window

Click the *Start* button, right-click on *My Network Places* and choose *Properties* from the pop-up menu.



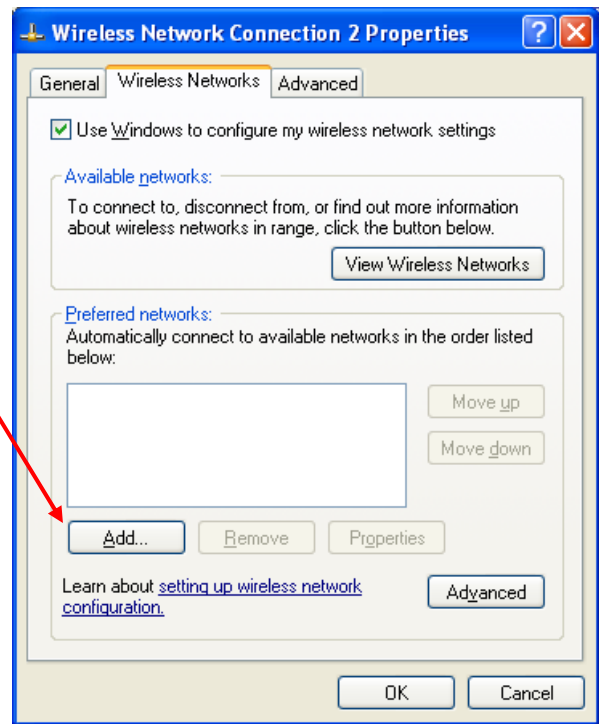
Display the Wireless Network Connection Properties Dialog Box

In the *Network Connections* window, right-click on the *Wireless Network Connection* icon and choose *Properties* from the pop-up menu.



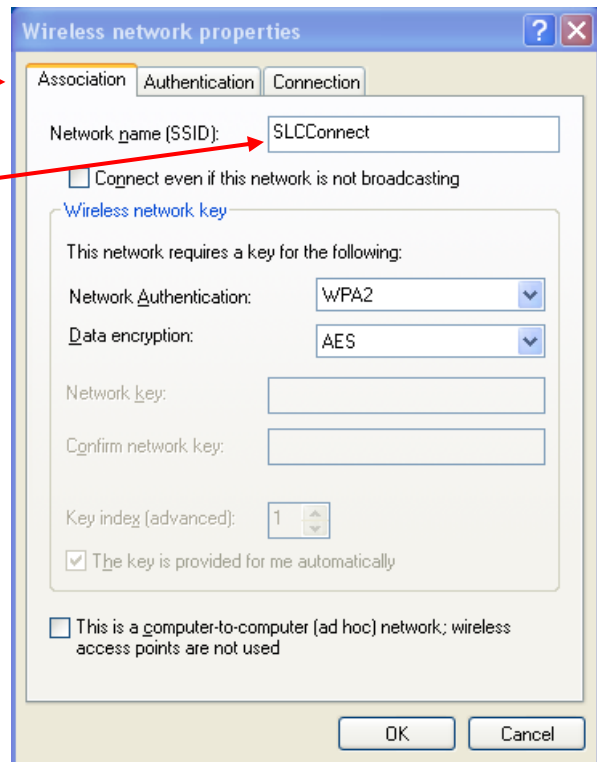
Configure the Wireless Network Connection

When the *Wireless Network Connection Properties* dialog box opens, click the *Wireless Networks* tab and then click the *Add* button to create a new profile.

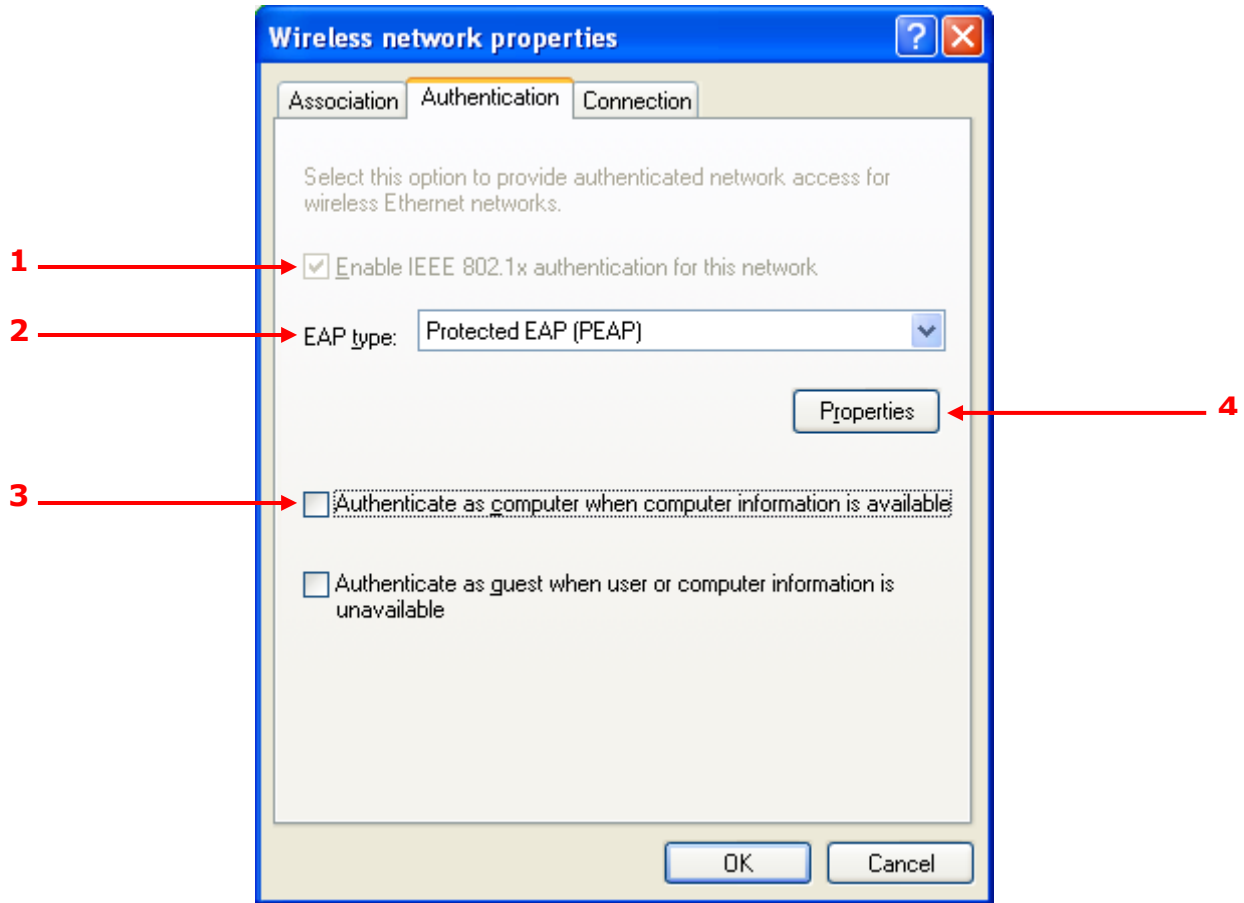


The *Wireless network properties* dialog opens. Click the *Association* tab.

In the *Network name (SSID):* field enter *SLCCConnect*.



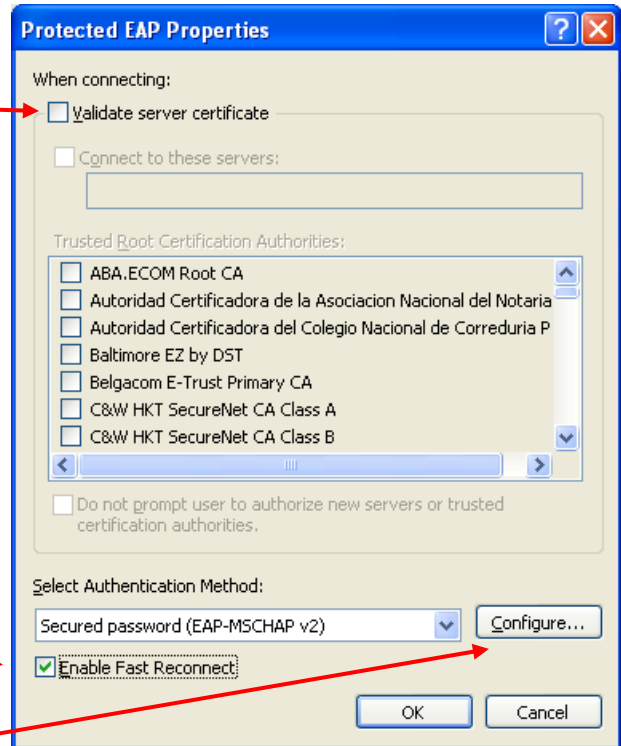
Now click the *Authentication* tab and ...



1. Make sure that the *Enable IEEE 802.1x authentication for this network* option is selected.
2. For *EAP type*: select: *Protected EAP(PEAP)*
3. De-select the *Authenticate as computer when computer information is available* option.
4. Click the *Properties* button.

Configure a Wireless Connection for Secure Access ... SSID: SLCCConnect

In the *Protected EAP Properties* dialog box, de-select the *Validate server certificate* option.

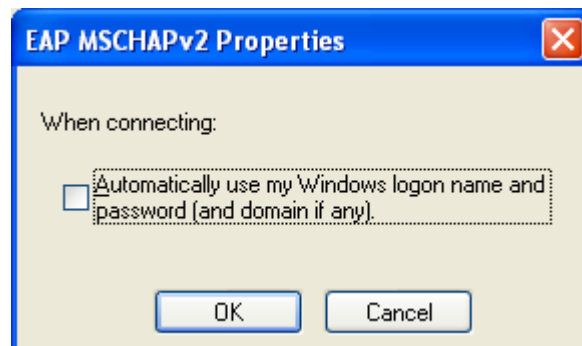


For *Select Authentication Method*: choose: *Secured Password (EAP-MSCHAP v2)*.

Select *Enable Fast Reconnect*.

Click the *Configure...* button to configure the authentication method.

In the *EAP MSCHAPv2 Properties* dialog box, de-select the *Automatically use my Windows logon name and password (and domain if any)* option and click *OK*.



Close the *Protected EAP Properties* dialog box – click *OK*.

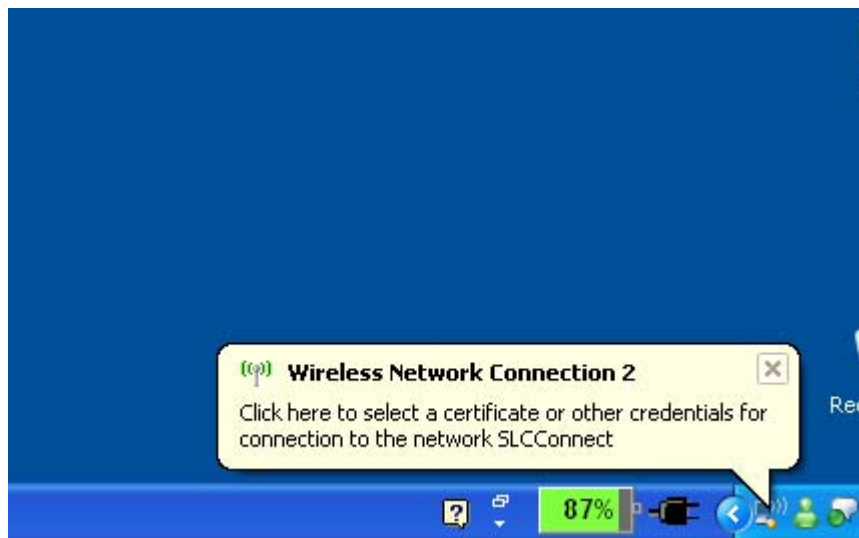
Close the *Wireless network properties* dialog box – click *OK*.

Close the *Wireless Network Connection Properties* dialog box – click *OK*.

Close the *Network Connections* window.

Authenticate to the SLCCConnect Wireless Network

In the bottom right corner of your screen a balloon tip will be displayed.



Click the balloon to display the *Enter Credentials* window.



In the *User name* field enter your SLC Windows network login name.

In the *Password* field enter your SLC Windows network login password.

Click *OK* to connect to the SLCCConnect wireless network.