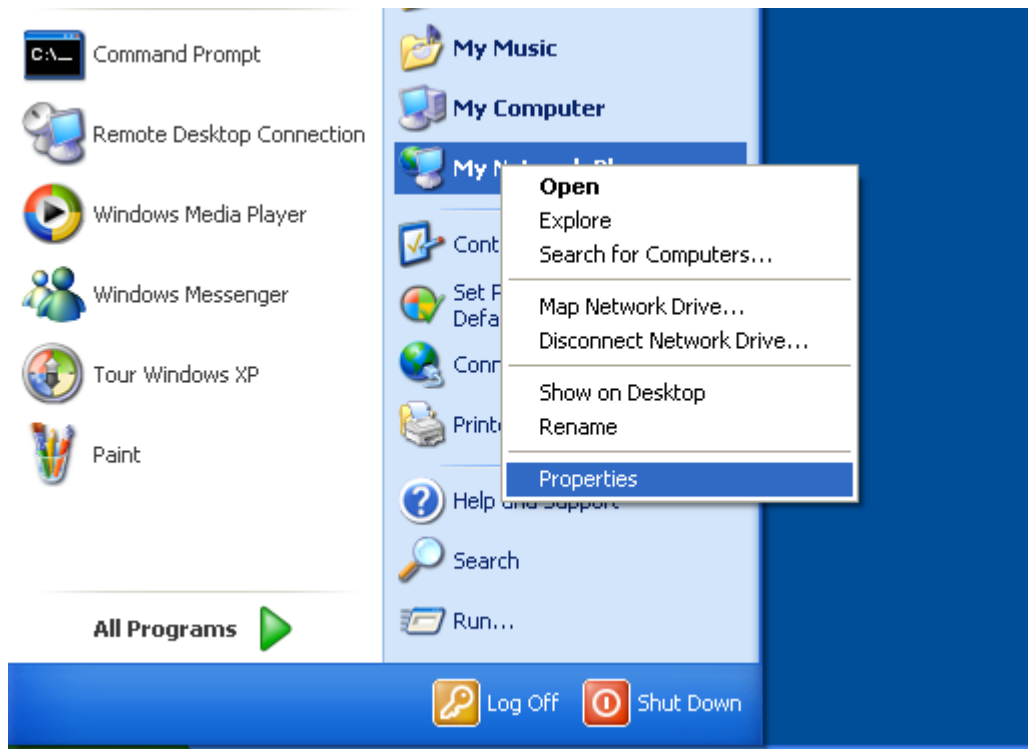


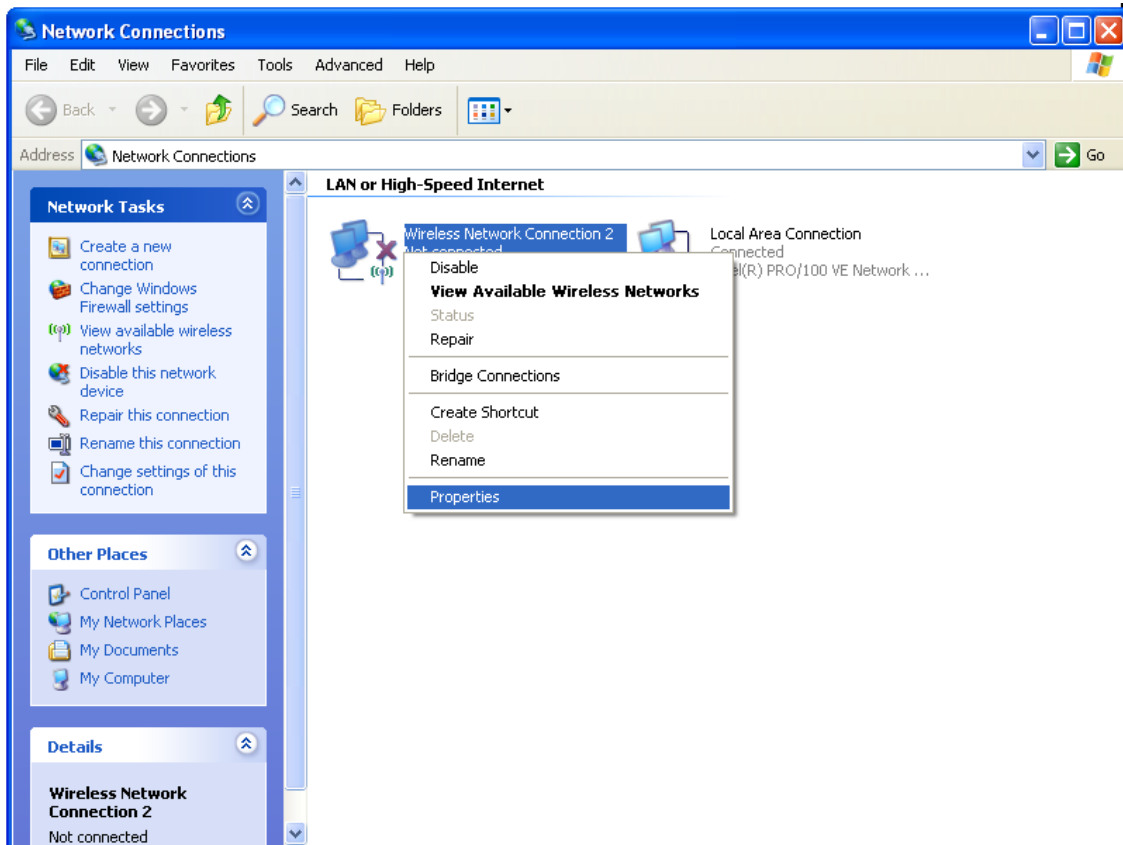
Display the Network Connections Window

Click the *Start* button, right-click on *My Network Places* and choose *Properties* from the pop-up menu.



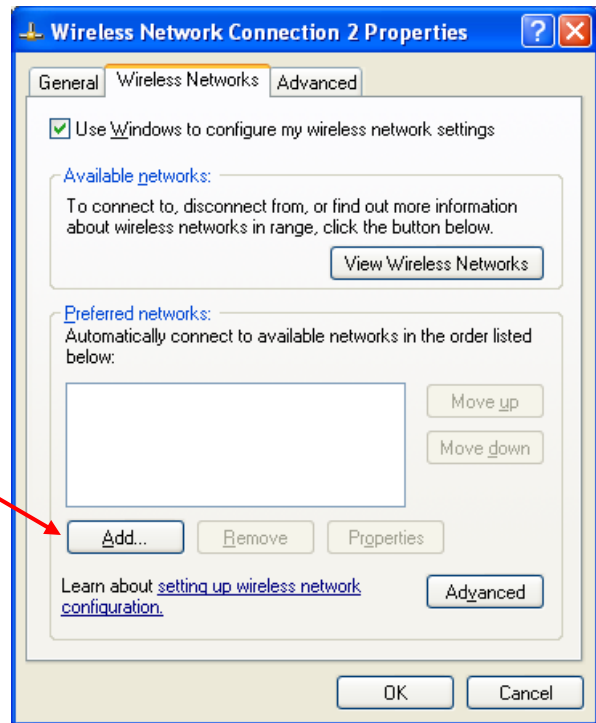
Display the Wireless Network Connection Properties Dialog Box

In the *Network Connections* window, right-click on the *Wireless Network Connection* icon and choose *Properties* from the pop-up menu.

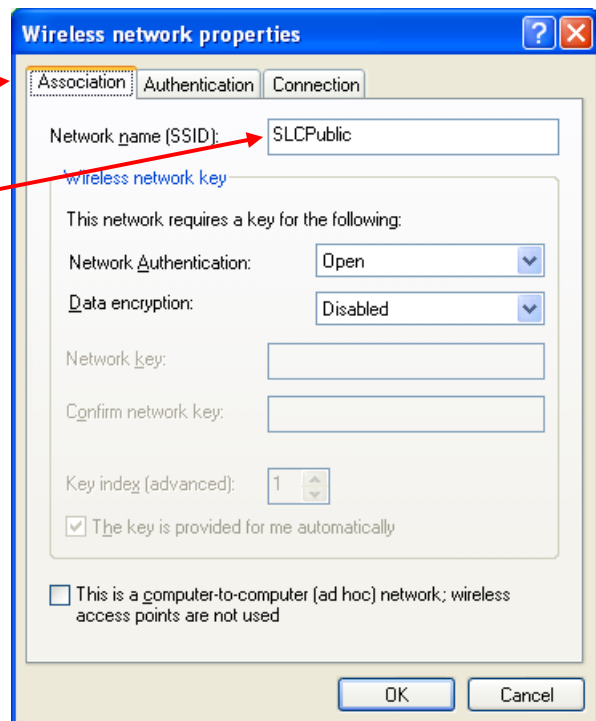


Configure the Wireless Network Connection

When the *Wireless Network Connection Properties* dialog box opens, click the *Wireless Networks* tab and then click the *Add* button to create a new profile.



The *Wireless network properties* dialog opens. Click the *Association* tab.



In the *Network name (SSID):* field enter *SLCPublic*.

Close the *Wireless network properties* dialog box – click *OK*.

Close the *Wireless Network Connection Properties* dialog box – click *OK*.

Close the *Network Connections* window.

Configure a Wireless Connection for Public Access ... SSID: SLCPublic

In the bottom right corner of your screen a balloon tip will be displayed. Your computer should connect to *SLCPublic* automatically. From this point you can connect via SLC VPN for your student resources.

